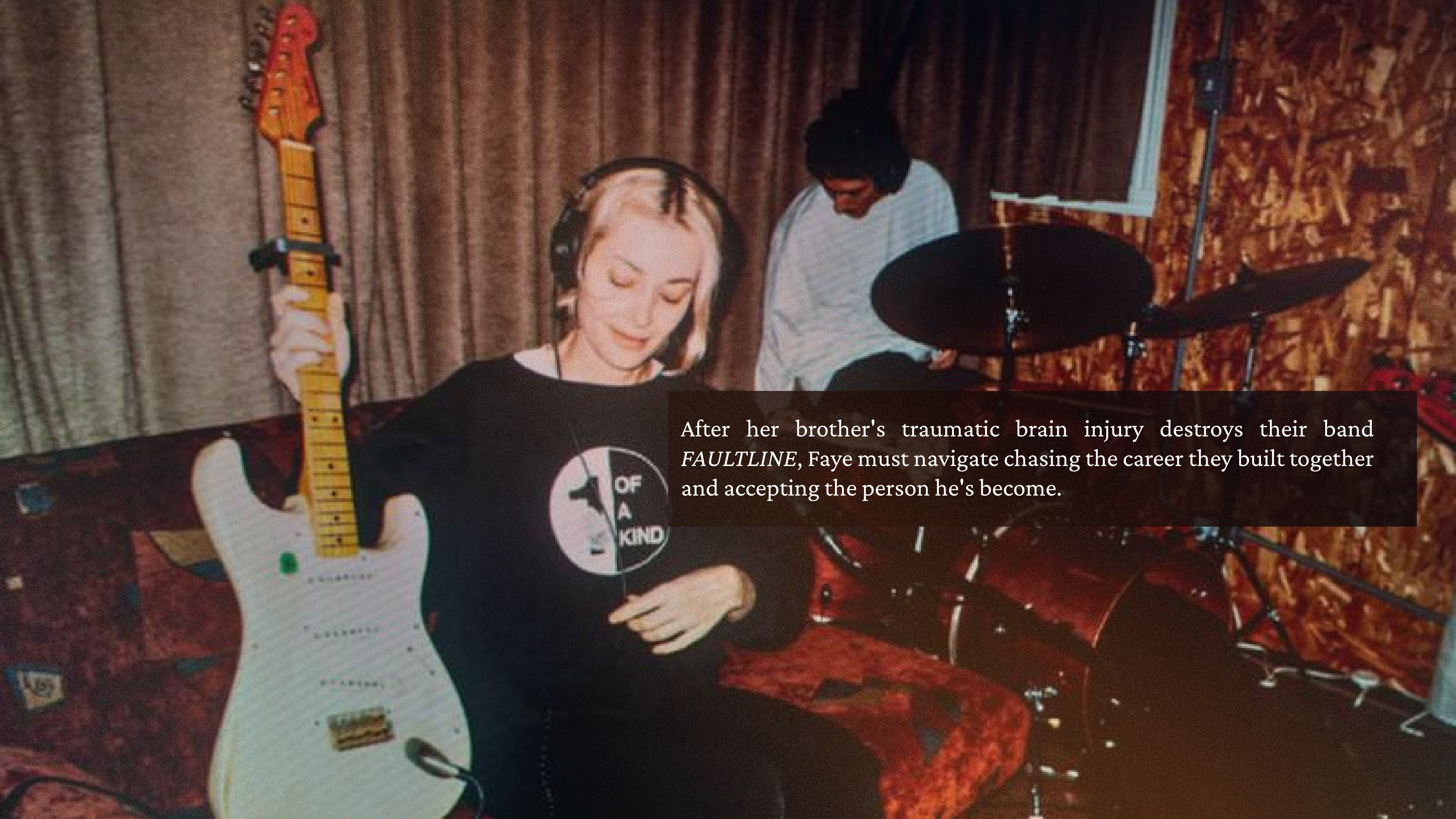


# FAULTLINE

INSPIRED BY A TRUE STORY



After her brother's traumatic brain injury destroys their band *FAULTLINE*, Faye must navigate chasing the career they built together and accepting the person he's become.

# THE STORY

*Faultline* was on the verge of breaking out—a brother-sister rock duo with a record deal and late-night TV appearances. Then came the accident that changed everything. Now, with two weeks left to deliver an EP or lose their deal, Faye struggles alone in the studio while Cameron—his memory fractured, his personality transformed—can barely remember being a musician at all.

When their manager Michelle books a last-chance recording retreat in rural Quebec, Faye discovers that her brother hasn't lost his musical soul—it's just waiting to be rediscovered. Under the guidance of Pim, an eccentric producer hiding his own grief, they learn that sometimes the most powerful music comes not from trying to recapture what was, but from embracing who we've become.

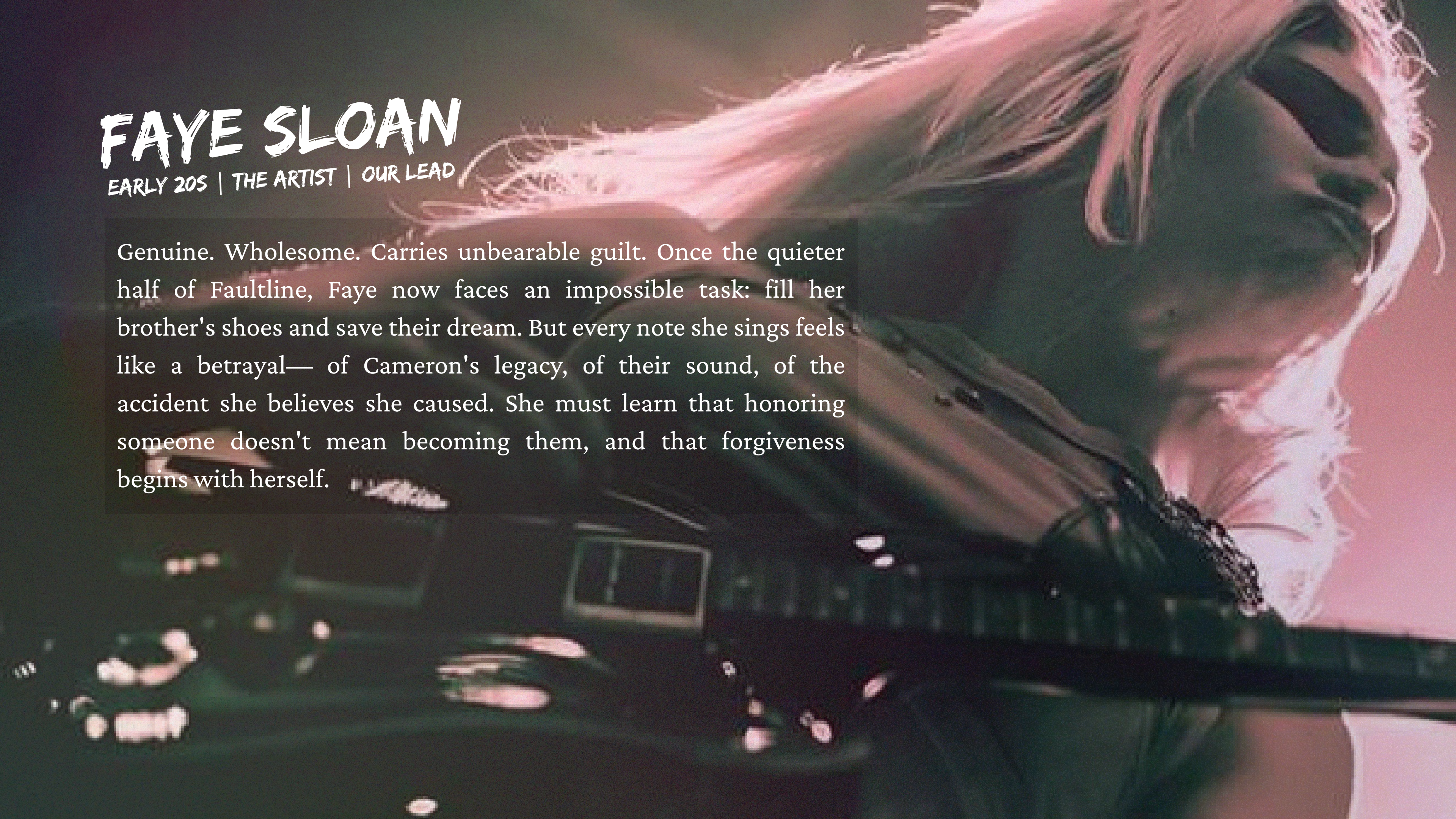
A group of people is shown in a dimly lit room, possibly a stage or a performance space. The lighting is dramatic, with strong highlights and deep shadows. The people are mostly in silhouette or partially lit, creating a sense of mystery and focus on their forms and movements. The overall mood is artistic and theatrical.

# THE CHARACTERS

# FAYE SLOAN

EARLY 20S | THE ARTIST | OUR LEAD

Genuine. Wholesome. Carries unbearable guilt. Once the quieter half of Faultline, Faye now faces an impossible task: fill her brother's shoes and save their dream. But every note she sings feels like a betrayal— of Cameron's legacy, of their sound, of the accident she believes she caused. She must learn that honoring someone doesn't mean becoming them, and that forgiveness begins with herself.



A photograph of Cameron Sloan performing on stage. He is wearing a black long-sleeved shirt and has dark, messy hair. He is holding a microphone with both hands and singing with his mouth wide open. The background is dark with some stage lighting.

# CAMERON SLOAN

LATE 20S | THE LOST SOUL | THE HEART

Cameron was once the charismatic frontman everyone couldn't take their eyes off. Now he watches old Faultline performances on YouTube—videos he has no memory of making. The brain injury stole his past, but music still reaches him: old lyrics surface without warning, melodies calm the confusion, and songs unlock what his damaged mind keeps locked away. He's not trying to become who he was. He's discovering who he can be now.



# MICHELLE SLOAN

MOTHER/MANAGER | THE PROTECTOR | THE PRAGMATIST

Corporate exterior. Maternal core. Fighting for control. Michelle wears two hats that don't always fit: mother and manager. She's already lost Cameron once—watching her charismatic son become someone she barely recognizes. Now she'll do anything to save Faye's career, even if it means pushing Cameron further away.

Artist turned fierce advocate, she must learn that protecting her children doesn't mean controlling their paths.



# PIM

40'S | THE MENTOR | THE HIDDEN HEALER

Eccentric Mozart type. Studio wizard. Running from grief. Pim understands the healing power of music because he's used it to avoid his own pain.

Hidden in his converted church studio after losing his wife and his record deal, he sees what Faye can't: that she's been living in her brother's shadow, trying to be someone she's not. He pushes her to find her own voice—even if it means letting go of everything "Faultline" was. Cameron's potential is discovered along the way, but Pim's mission is liberating Faye. Teaching her to face her guilt may force him to finally face his own loss.

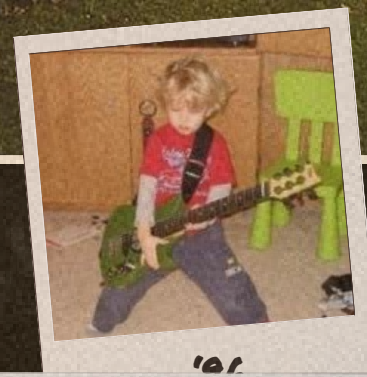
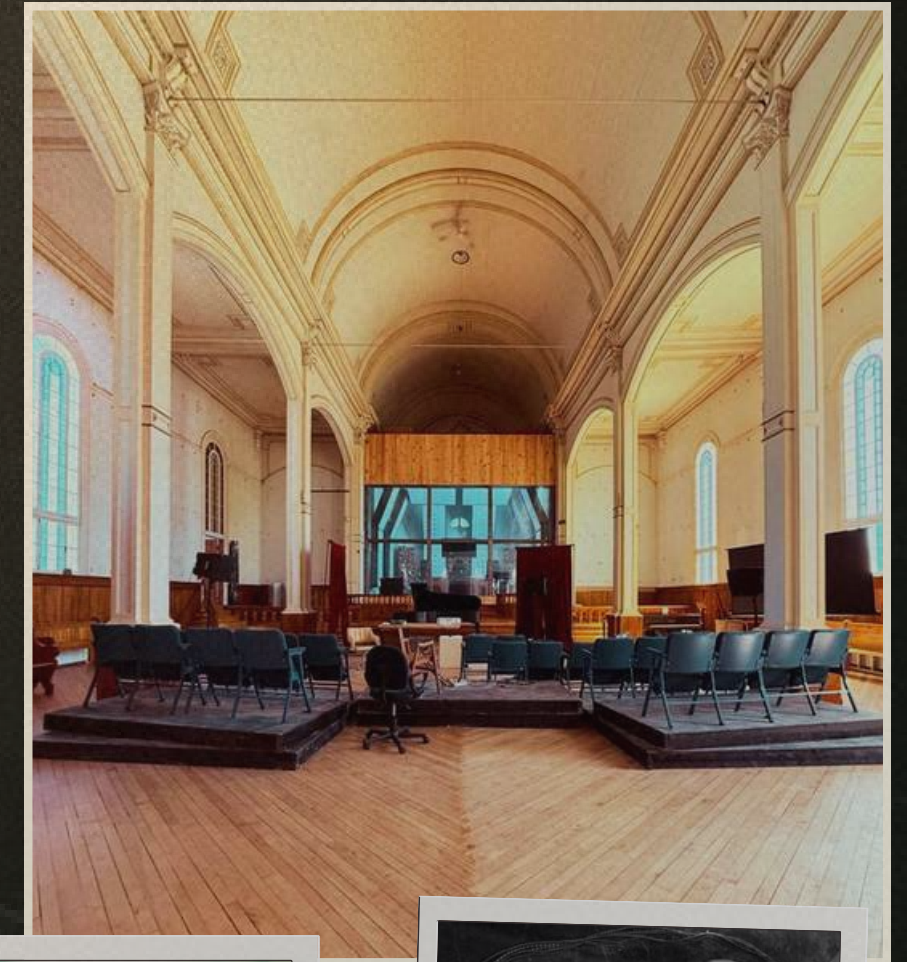


# THE WORLD

MONTREAL, CANADA



THE REAL STUDIO LOCATION IN ST. ADRIEN, QUEBEC



'91



'91



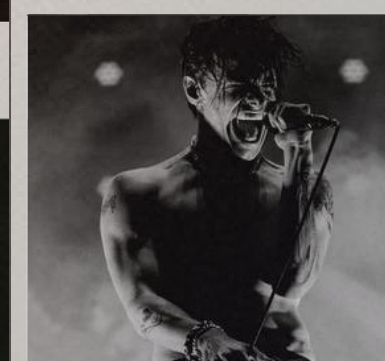
'98



2002



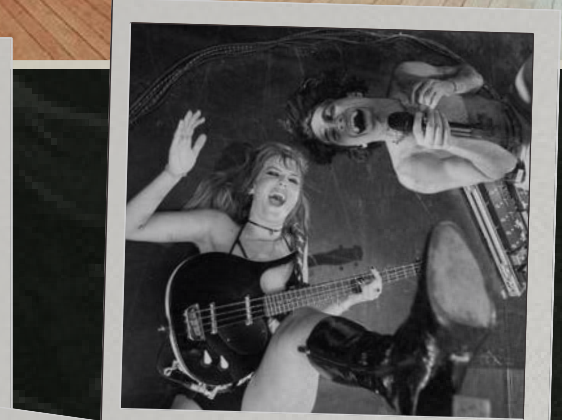
2015



2023



2024



2025 TOUR

HISTORY OF THE BAND

## THE SONIC JOURNEY FROM FAULTLINE

### (BEFORE):

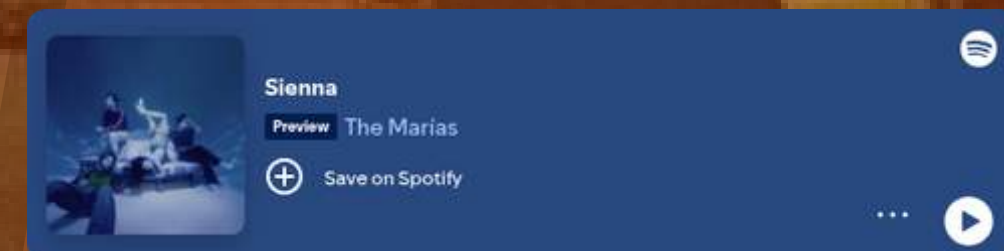
- GRETA VAN FLEET
  - ENERGY
- THE NAKED AND FAMOUS
  - INDIE ROCK MALE FEMALE VOCALS
- MATT AND KIM
  - ICONIC INDIE MOVIE SOUNDTRACK

### (AFTER):

- RIOT GRRRL INFLUENCE
- VULNERABLE, RAW PRODUCTION
- FOUND SOUNDS AND IMPERFECTIONS
- MUSIC AS THERAPY, NOT PERFORMANCE

### ORIGINAL SONGS REQUIRED:

- 4-5 ORIGINAL TRACKS SHOWING EVOLUTION
- FROM POLISHED TO AUTHENTIC
- FROM IMITATION TO INNOVATION





# THEMES

## GUILT & FORGIVENESS

Can we forgive ourselves for surviving?

## IDENTITY & TRANSFORMATION

Who are we when we can't be who we were?

## FAMILY & SACRIFICE

How much do we give up for those we love?

## AUTHENTICITY & ARTISTRY

Is the best art born from pain or joy?

## HEALING & ACCEPTANCE

Sometimes moving forward means letting go.

# COMPARABLES



FOUND FAMILY, DISABILITY,  
UNEXPECTED FRIENDSHIP



PARENT-CHILD MUSICAL  
COLLABORATION, LETTING GO



FAMILY OBLIGATION VS. PERSONAL  
DREAMS, MUSIC AS EXPRESSION



CREATING ART FROM PAIN,  
FINDING YOUR SOUND



IDENTITY CRISIS THROUGH  
DISABILITY, ACCEPTANCE JOURNEY

# FILMMAKERS

*co-director / co-writer*

**DAKOTA DAULBY**

DAKOTA is an award-winning actor and producer who utilizes filmmaking to transform life's challenges into powerful narratives on screen. He has worked with Netflix and Bron Studios, and recently premiered SHORTS AT VANCOUVER SHORT FILM FESTIVAL, PROOF FILM FESTIVAL, SITGES, and SANTA BARBARA INTERNATIONAL FILM FESTIVAL. He has also optioned a feature film "VANCE" based on a proof of concept short with Michael Hirst's new production company via Vesperia Films.



HARRISON recently directed his first feature film TIGHT LETTUCE which is currently in post-production. As a multi-hyphenate — director, music producer, writer, and actor — he is known for bringing high concepts and deep characters into propulsive genre. He began his career acting, leading several TV series, and is a Canadian Screen Award winner. His Japanese-English proof-of-concept, poppy action film CAFE RACER won the TOKYO FILM AWARD and is currently in development as a feature film.

**HARRISON HOUDE**

*co-director / co-writer*

# FROM THE DIRECTORS

HARRISON HOUDE: My neurodivergent brain sees patterns others miss in music, in story, in human behavior. That unique lens is exactly what FAULTLINE needs. Having spent years creating musical narratives and building audiences through unconventional storytelling, I understand how art becomes language when words fail. This film isn't about tragedy; it's about the unexpected beauty that emerges when we stop trying to fix what's broken and start creating something entirely new from the pieces.

DAKOTA DAULBY: Cerebral Palsy gave me a director's eye that sees beyond limitation to possibility. I know firsthand that disability doesn't subtract from who we are. It adds layers, complexity, and unexpected strength. Cameron's journey resonates deeply: the world sees deficit, but I see a different kind of wholeness. My lived experience navigating systemic barriers, combined with my visceral understanding of adaptation, ensures this story will be told with unflinching honesty and hard-won hope.

---

Together, Harrison & Dakota's creative partnership is proven across multiple projects. TIGHT LETTUCE, their feature-length debut which Harrison directed and Dakota starred in after the two co-wrote the screenplay, established their ability to craft distinctive narratives. ADJOINING elevated their visual ambitions, premiering at Screamfest LA as a stunning psychological horror that garnered significant press coverage.

These collaborations demonstrate our range and our ability to merge bold visual style with authentic storytelling. Harrison's musical intuition and unique visual language meets Dakota's embodied understanding of transformation and performance.

**FAULTLINE represents our most personal collaboration yet, where every lesson we've learned comes together in service of this powerful story.**





# MUSIC COMPOSER / ORIGINAL SCORE

PILOU

Pierre-Philippe Côté, also known as Pilou, is a Québec-based composer, multi-instrumentalist, and producer recognized for his work in film, television, advertising, and video games. Trained in double bass at the Conservatoire de musique de Montréal and The Glenn Gould School in Toronto, he brings both classical rigor and contemporary edge to his scores.

He has collaborated with artists such as Jorane, Elisapie, and Ariane Moffatt, and reached national charts with “Alive Again” alongside DJ Champion. He has won awards nationally and internationally for projects such as Les Affamés, Claire et les vieux and Discrètes.

As the FAULTLINE, Pilou will compose the original score and oversee music supervision and audio post-production, shaping a cohesive sonic identity that supports the film’s emotional depth and cinematic tension.



1 Passagers · Pilou

2 All I Know · Pilou

3 Blood Love · Pilou

4 Nos chemins · Pilou

Pilou · Top tracks

Preview

⏮ ⏪ ⋮ ⏩ ⏭



# PRODUCER

## JAN SIKORA



**Jan** is a producer at Vesperia Films, supporting Vesperia's slate from early development through full production. His recent credits include ADJOINING (Screamfest LA), KEELHAUL (Sitges; Santa Barbara International Film Festival), and TERM (to be released), starring Dean Norris. Recently, he worked closely with director Rachel Goldberg (Gen V, Resident Evil, Agatha All Along, American Gods) as Director's Assistant on Netflix's AVATAR: THE LAST AIRBENDER. Jan brings a strong foundation in creative development and hands-on production experience, contributing both narrative insight and logistical expertise to every project he oversees.



# SONGWRITER

## AVEY "AVERY COOMBE"

- MUSICAL STYLE FUSES TRADITIONAL INSTRUMENTS WITH DARKER ELECTRONIC ELEMENTS
- INFLUENCES INCLUDE BON IVER, HOLLY HUMBERSTONE, THE 1975, BILLIE EILISH
- KNOWN FOR HONEST, EMOTIONAL TONE IN HER MUSIC
- DEBUT SINGLE "END GAME" EXPLORES THE VULNERABILITY OF FALLING IN LOVE





**Vesperia Films** is an award-winning production company led by filmmakers Dakota Daulby and Harrison Houde, known for bold, character-driven work across film and television. Their projects have premiered at major international festivals, including Tokyo's Shibuya Sasebo Tenpen Film Festival, Beverly Hills International Film Festival, Sitges, the Santa Barbara International Film Festival, and the Proof Film Festival, earning strong critical and industry recognition.

The company is currently expanding its slate with several high-profile projects in development, including a collaboration with BAFTA winner Michael Hirst's production company and a new feature film with producer Montgomery Blencowe, starring Lovi Poe. Vesperia's debut feature, *Tight Lettuce*, is set for release in 2026, marking a significant milestone in the company's growing global footprint.

Driven by a clear creative vision and backed by a world-class network of collaborators, Vesperia Films continues to scale its impact and deliver ambitious, internationally resonant stories.



**VESPERIA**  
**2024 SCREAMFEST LA**

**VIEW VESPERIA'S WEBSITE**

QUEBEC

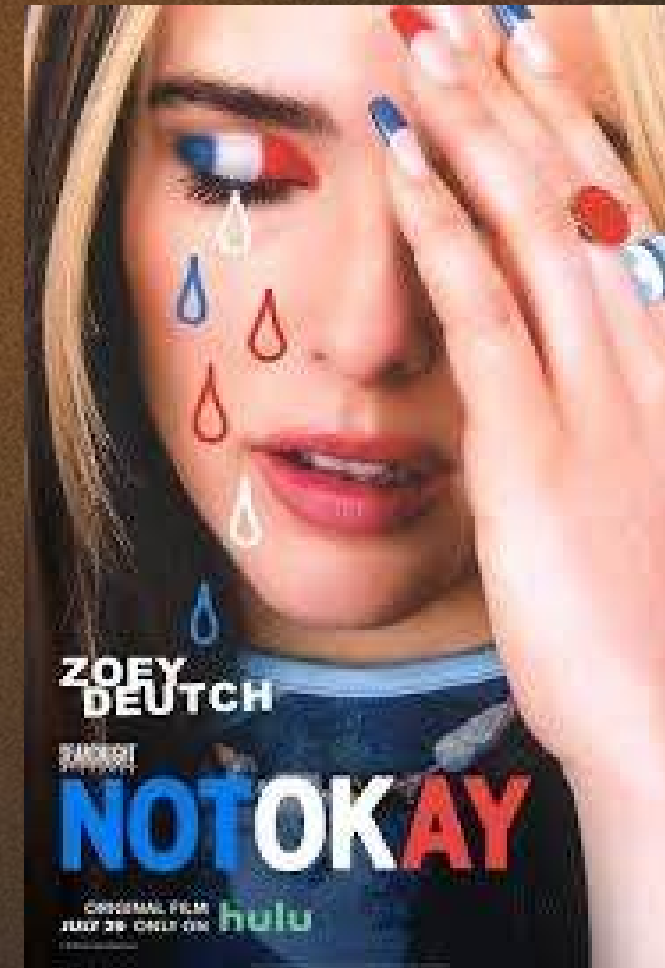
PRODUCTION

SUPPORT



Studio Le Nid, will operate as a co-producer, contributing to strategic oversight, production support, and infrastructure resources on location in Quebec. This includes access to their in-house recording and post-production facilities, music supervision leadership, and coordination of audio production services, ensuring both creative excellence and operational efficiency throughout the production pipeline.

Based in Estrie, Québec, Studio Le Nid operates as a high-level creative and recording facility designed to attract and support professional film and music projects outside major urban centers. Our participation reinforces the regional economic and cultural impact of FAULTLINE, contributing to local employment, infrastructure utilization, and the continued decentralization of audiovisual production in Québec.



PAST WORK

PAST WORK

PAST WORK

PAST WORK



MUSIC HAS THE POWER TO HEAL

# FAULTLINE

[CLICK TO READ THE FULL OUTLINE](#)

DAKOTA@VESPERIAFILMS.COM  
HARRISON@VESPERIAFILMS.COM  
JAN@VESPERIAFILMS.COM